



Pick-Up Broom

For

Skid Steer Loaders

Operator's Manual
Set-Up Assembly
Maintenance
Parts Information



Read this Manual Before Use

TABLE OF CONTENTS

SAFETY	3-4
SERIAL NUMBER/DECAL LOCATION	5-6
USER'S MOUNTING INSTRUCTIONS	7-8
OPERATING INSTRUCTIONS	9-12
ROUTINE MAINTENANCE	13-16
SET-UP ASSEMBLY	17-21
PARTS INFORMATION	22-29
GENERAL SPECIFICATIONS	30
WARRANTY	31

REFERENCE INFORMATION

Write the serial number for your attachment in the spaces below. Always refer to this serial number when calling for service or parts.

Serial Number....._____

YOUR ATTACHMENT DEALER

ADDRESS:

PHONE:

CONTACT:

NOTE: *Erskine Attachments LLC reserves the right to make improvements in design or changes in specifications at any time without notice and without incurring any obligations to install them on units previously sold.*

SAFETY

DO NOT use or perform maintenance on this machine until this manual has been read and understood. In addition, read the Operation and Maintenance Manual(s) pertaining to the attachment and the attachment carrier (“Loader”).

The user is responsible for inspecting the machine daily, and for having parts repaired or replaced when continued use of the machine would cause damage, excessive wear to other parts or make the machine unsafe for continued operation.

If an operating procedure, tool device, maintenance or work method not specifically recommended is used, you must satisfy yourself that it is safe for you and others. You must also ensure that the attachment will not be damaged or made unsafe by the procedures you choose.

Erskine Attachments LLC cannot anticipate every possible circumstance that might involve potential hazard. The safety messages found in this manual and on the machine are therefore not all inclusive.

Throughout this manual reference may be made to the left hand (LH) or right hand (RH) side. These terms are used as viewed from the operator’s seat facing forward.

The signal words **CAUTION**, **WARNING**, or **DANGER** are used to indicate hazards.

⚠ CAUTION Indicates a potentially hazardous situation which, if not avoided, may result in minor or moderate injury.

⚠ WARNING Indicates a potentially hazardous situation which, if not avoided, could result in death or serious injury.

⚠ DANGER Indicates a potentially hazardous situation which, if not avoided, will result in death or serious injury.

The word **IMPORTANT** is used in the text when immediate damage will occur due to improper technique or operation.

The word **NOTE** is used to convey information that is out of context with the manual text; special information such as specifications, techniques, reference information, and other information of a supplementary nature.

Improper operation can cause serious injury or death.

Pre-operation

- This machine is designed for sweeping dirt and small debris from hard surfaces only. **NEVER** use this machine for any other purpose.
- Read the operator's manual for the "Skid Steer Loader." **NEVER** allow untrained people to operate.
- Operating instructions must be given to everyone before operating this attachment and at least once a year thereafter in accordance with OSHA regulations.
- **NEVER** exceed the maximum recommended input power or speed specifications for the attachment. Over-powering or over-speeding the attachment may cause personal injury and/or machine damage.
- Keep all shields, guards, and covers in place.
- Do not modify equipment or add attachments that are not approved by Erskine Attachments LLC.
- Use adequate safety warning lights and devices as required by local regulations. Obey all local laws and regulations regarding machine operation on public property.

Operation

- Always wear eye protection that meets ANSI z87.1 standard or use with a loader enclosure that provides similar protection.
- Hydraulic connections may be hot after use. Use gloves if connecting or disconnecting after use.
- Check and be sure all operating controls are in neutral before starting the engine.
- Keep people away from loader, attachment and discharge when in use. This attachment sends objects flying and has rotating parts. **NEVER** direct discharge toward people – rocks and debris can be thrown.
- Depending on how this attachment is used, dust can be created. Prolonged exposure to dust can cause chronic and acute health problems. A NIOSH-approved respirator may be required.

Operation (continued)

- **NEVER** operate near embankments or terrain that is so steep that rollover could occur.
- Always stay in the operator position when using the attachment.
- Before leaving the operators position, disengage hydraulic drive, lower the attachment to rest flat on the ground, stop engine, set park brake, and wait for all motion to stop.
- **NEVER** place hands in the discharge area or clear debris while engine is running.

Avoid High Pressure Fluids Hazard



- Escaping fluid under pressure can penetrate the skin causing serious injury.
- Avoid the hazard by relieving the pressure before disconnecting hydraulic lines.
- Use a piece of paper or cardboard, NOT BODY PARTS, to check for suspected leaks. Wear protective gloves and safety glasses or goggles when servicing or performing maintenance on hydraulic systems.
- If an accident occurs, see a doctor immediately. Any fluid injected into the skin must be surgically removed within a few hours or gangrene may result.

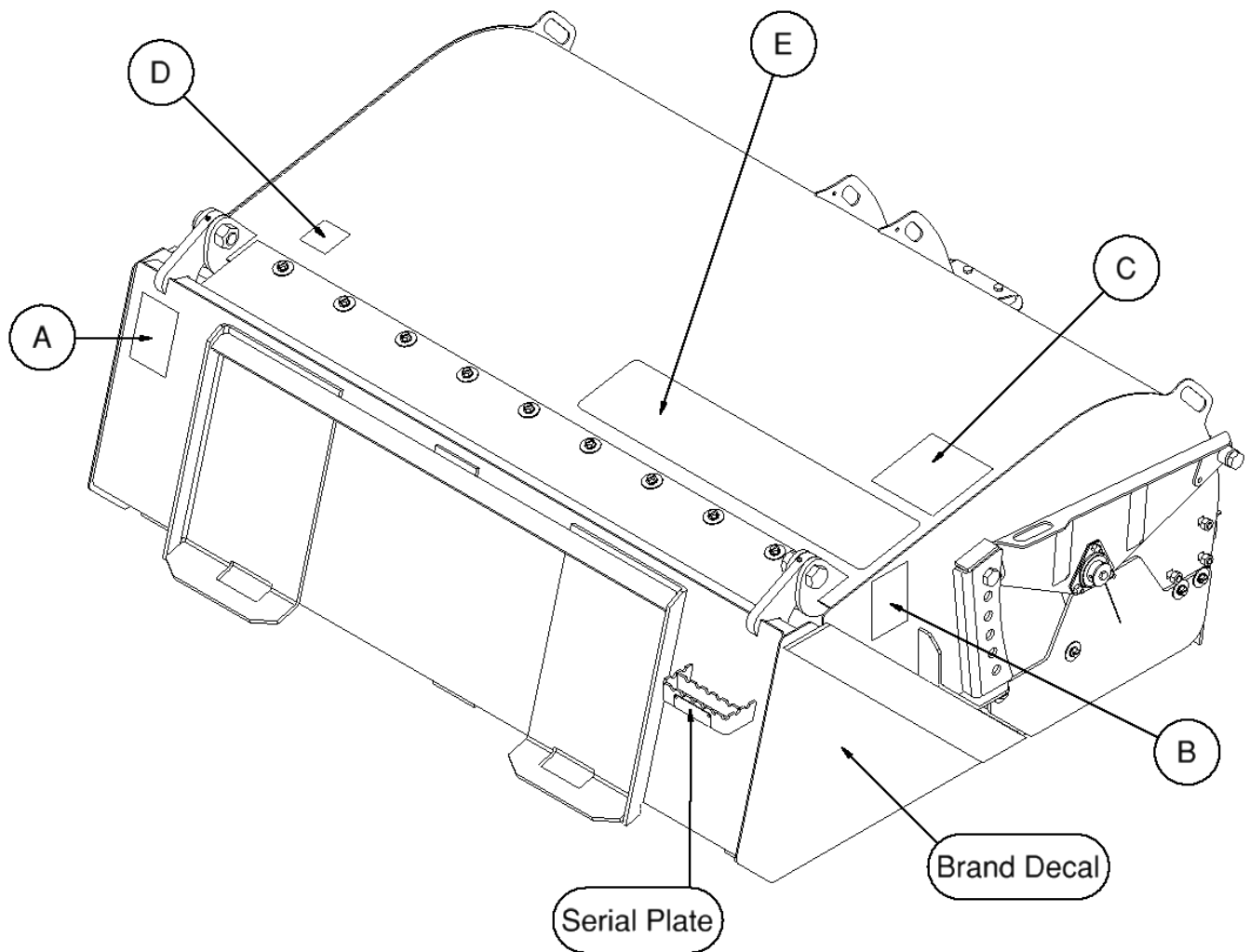
Maintenance

- **NEVER** make adjustments, lubricate, clean, or perform any service on the machine while it is in operation.
- Make sure the attachment is serviced on a daily basis. Improper maintenance can cause serious injury or death in addition to damage to the attachment and/or your equipment.

SERIAL NUMBER AND SAFETY DECAL LOCATIONS

Serial Number Location:

It is important to refer to the serial number of the attachment when making repairs or ordering parts. Early or later models (identification made by serial number) may use different parts, or it may be necessary to use different procedures in doing a specific operation.



SERIAL NUMBER AND SAFETY DECAL LOCATIONS



Part number: 200001

Location: On back of bucket, left side

Quantity: 1



Part number: 203234

Location: On each side of broom near pivot

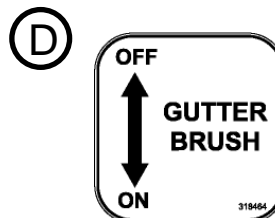
Quantity: 2



Part number: 318289

Location: On top of hood, right side

Quantity: 1



Part number: 318464

Location: On top of hood, next to opt. valve

Quantity: 1 (w/ Optional Curb Sweeper)



Part number: 314096 (Anti-skid tape 6x28)

Location: On top of hood, right side

Quantity: 1

Small Brand Decal

Location: On each side of bucket

Quantity: 2

Safety Decals Locations:

The locations of the safety decals are shown. If these decals are missing, damaged, or painted over they must be replaced. Call Erskine Attachments LLC (218-435-4045) for replacement decals.

USER'S MOUNTING INSTRUCTIONS

After the initial set-up assembly is completed use the following procedure to mount the attachment to the loader.

⚠ WARNING Levers must be fully down and locked. Failure to secure wedges or pins can allow the attachment to come off and cause injury or death.



1. Use the step, safety treads, and grab handles to get on and off the loader and attachment.

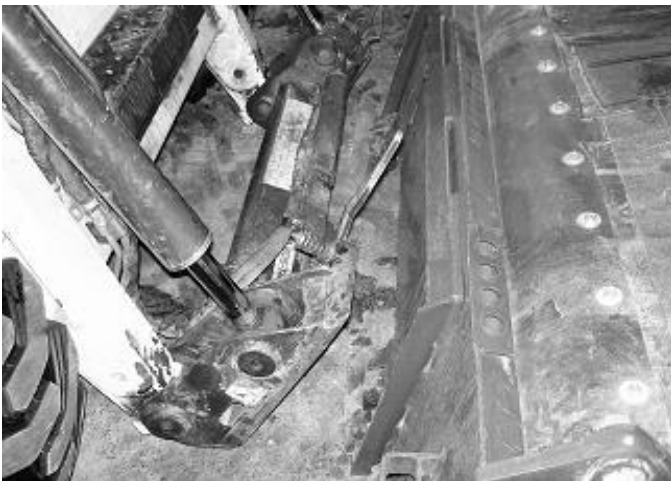
2. Sitting in the operator's seat, lower seat bar (if so equipped) and fasten the seat belt.

3. Drive the loader to the rear of the attachment. Put the loader quick attach coupler into the attachment mounting bracket.

4. Tilt the loader coupler backward a small amount until it is fully engaged in the attachment mounting bracket.

5. Stop the engine and engage the park brake.

6. Secure the coupler locking mechanism that attaches the attachment to the loader.



USER'S MOUNTING INSTRUCTIONS

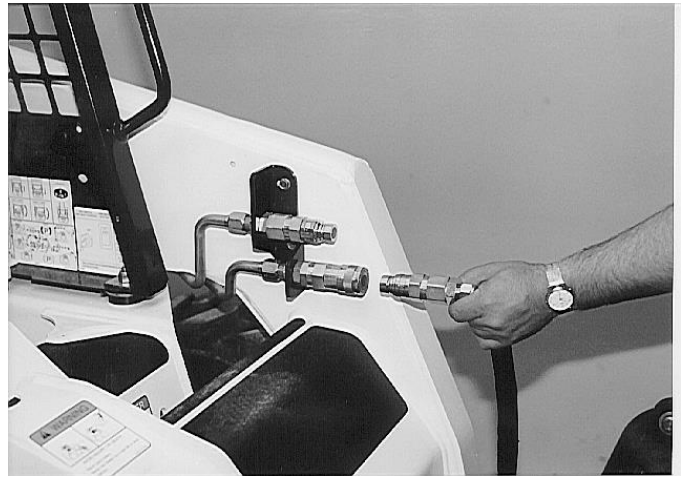
7. Connect the hydraulic quick couplers from the attachment to the loader.

IMPORTANT: Wipe the ends of the hydraulic quick couplers (both lead and loader) with a rag to remove any possible contamination. Contamination can cause hydraulic components to fail and is not covered under warranty.

IMPORTANT: Make sure the quick couplers are fully engaged. If the quick couplers do not fully engage, check to see that the couplers are the same size and brand. Do not force the quick couplers together.

NOTE: See the loader's operator's manual for auxiliary hydraulic specifications and connection instructions.

NOTE: Attachment is shipped with 12FJX (1-1/16" Female JIC Swivel) fittings on the ends of the lead hoses.



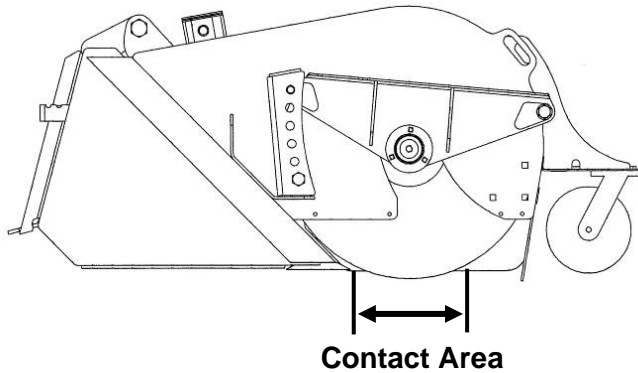
8. Make sure the hoses are properly routed to fit your specific loader. If the hoses are not routed correctly, hoses may get pinched or rub on tires. Be sure to check the hose routing through the full range of intended motion of the attachment before operating it.

More than one routing may be acceptable depending on the loader. Pick the routing that best suits your loader.

IMPORTANT: Proper hose routing is the responsibility of the owner and/or operator. Pinched or stretched hoses are not covered under warranty.

Mounting is now complete and the attachment is ready for operation. Use reverse order of above instructions to dismount the attachment from the loader.

OPERATING INSTRUCTIONS



1. With the operator in the seat of the loader, the seatbelt fastened, and the seat bar lowered (if so equipped), start the engine.
2. Position the attachment so that the bucket is slightly off of the ground, and the broom assembly wheel is resting on the ground.

IMPORTANT: Excessive down pressure will cause premature bristle wear or breakage.

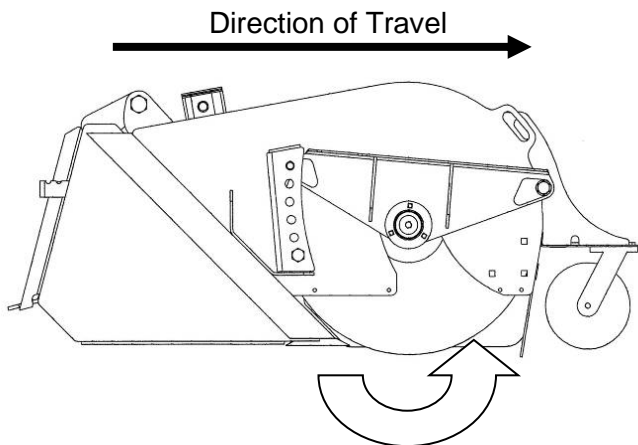
NOTE: The down pressure on the broom determines the broom contact area on the surface, or the length of bristle contact with the surface. It is recommended to maintain a 2" to 4" bristle contact area while sweeping.

3. At low engine **idle** speed, activate the loader's auxiliary hydraulics in continuous flow mode to start the broom bristles turning.

IMPORTANT: To prevent hydraulic motor damage, always reduce engine speed to idle when engaging and disengaging auxiliary hydraulic flow.

4. Gradually increase engine speed until operating rpm is reached.

IMPORTANT: When making sharp turns, raise the front wheel of the attachment off of the ground slightly to avoid damage to the caster assembly.



Forward Travel

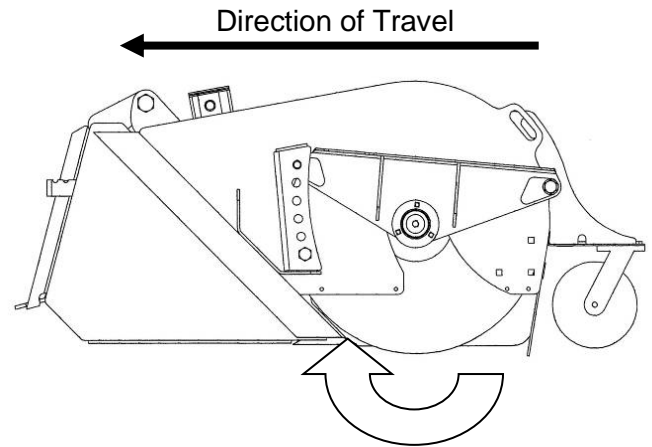
For normal sweeping, position the bucket cutting edge slightly above the ground (this helps avoid scratching of the surface being swept), activate the auxiliary hydraulics so that the bristles sweep away from the operator (as shown), and slowly drive the loader forward.

OPERATING INSTRUCTIONS

Backwards Travel

If the debris is packed onto the surface being swept, or to pick up larger/heavier material, position the bucket with the cutting edge flat on the ground, activate the hydraulics so that the bristles sweep toward the operator (as shown), and slowly drive the loader backwards.

IMPORTANT: If the pick-up broom is equipped with the optional curb sweeper, make sure the curb sweeper arm has been secured in the up position. The curb sweeper is not designed to be used in the reverse direction. Doing so may result in damage to the curb sweeper.



Dumping the Bucket

1. When debris starts falling out of the bucket back onto the surface, this is an indication that the bucket is full and needs to be dumped.
2. Reduce engine speed to idle, disengage the hydraulic drive, raise the attachment slightly off the ground, and drive the loader to the desired dumping area.

⚠ WARNING To avoid serious injury or death due to tipover, carry attachment as low as possible while transporting.

3. Raise the loader lift arms and tip the attachment forward in order to empty the bucket of debris.

⚠ WARNING To avoid serious injury or death due to tipover, NEVER lift loaded attachment more than 3 feet off of the ground.

4. Lower the attachment and resume sweeping operation.



OPERATING INSTRUCTIONS

Operating the Optional Curb Sweeper

1. With the loader engine off, the attachment resting flat on the ground, and the park brake set, remove the holding pin from the curb sweeper arm.

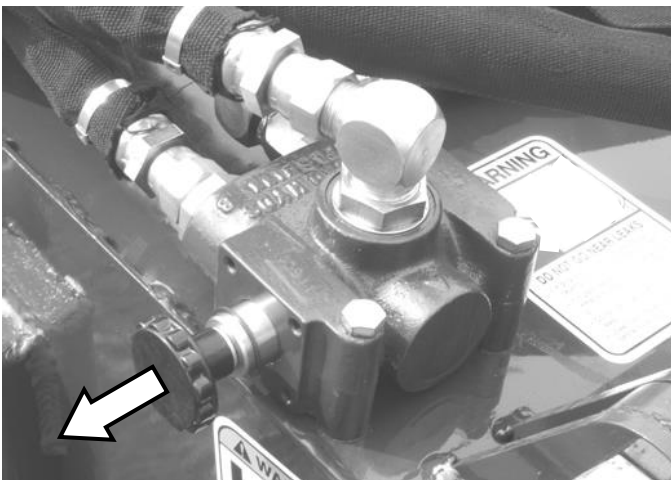


2. Holding onto the handle on the curb sweeper arm, slowly lower the curb sweeper to rest on the ground and install the pin in the floating position.



3. Pull the knob on the valve out to allow oil to flow to the curb sweeper hydraulic motor.

IMPORTANT: Always disengage the auxiliary hydraulics before attempting to shift the manual valve. Failing to do so can damage the valve.



OPERATING INSTRUCTIONS

4. With the operator in the seat of the loader, seat bar lowered (if so equipped), and seat belt fastened, start the loader engine.
5. At low engine idle speed, activate the auxiliary hydraulics to start the broom bristled turning away from the operator. The curb sweeper will also start turning.
6. Gradually increase engine rpm to operating speed, and slowly drive the loader forward to begin sweeping.

IMPORTANT: When sweeping next to curbs, be sure that only the bristles on the curb brush touch any vertical surfaces.

IMPORTANT: The curb sweeper is only designed to be used while travelling in the forward direction. Operating the curb sweeper while travelling in the reverse direction can damage the curb sweeper.

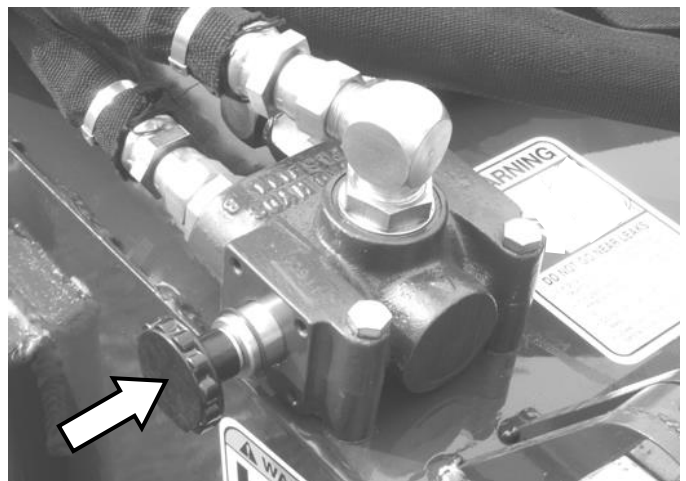


To disengage the curb sweeper:

1. At low engine idle speed, disengage the hydraulic drive, lower the attachment to rest flat on the ground, shut down the engine, engage the park brake, and wait for all motion to stop.
2. Push the knob on the valve in to stop oil flow to the curb sweeper motor.

IMPORTANT: Always disengage the auxiliary hydraulics before attempting to shift the manual valve. Failing to do so can damage the valve.

3. Remove the pin from the floating position, use the handle to lift the curb sweeper arm up to the storage position, and reinstall the pin to lock the curb sweeper arm up in place.



ROUTINE MAINTENANCE

⚠ WARNING Lower the attachment to rest flat on the ground, disengage the hydraulic drive, shut down the engine, relieve the hydraulic pressure to the attachment, set the park brake, and wait for all motion to stop before leaving the operator's seat to perform service of any kind.

It is the operator's responsibility to make daily inspections of the loader and attachment for damage, loose bolts, fluid leaks, or anything else that could cause a potential service or safety problem. Preventive maintenance is the easiest and least expensive type of maintenance.

IMPORTANT: Bolts and set screws can loosen after initial usage. After the first hour of operation check all bolts and set screws.

Torque-Tension Relationships for SAE J429 Grade Bolts

Nominal Thread Size	SAE J429 Grade 2				SAE J429 Grade 5			SAE J429 Grade 8		
	Clamp Load (lbs)	Tightening Torque		Clamp Load (lbs)	Tightening Torque		Clamp Load (lbs)	Tightening Torque		
		K = .15	K = .20		K = .15	K = .20		K = .15	K = .20	
Unified Coarse Thread Series										
1/4-20	1,300	49 in-lbs	65 in-lbs	2,000	75 in-lbs	100 in-lbs	2,850	107 in-lbs	143 in-lbs	
5/16-18	2,150	101	134	3,350	157	210	4,700	220	305	
3/8-16	3,200	15 ft-lbs	20 ft-lbs	4,950	23 ft-lbs	31 ft-lbs	6,950	32.5 ft-lbs	44 ft-lbs	
7/16-14	4,400	24	30	6,800	37	50	9,600	53	70	
1/2-13	5,850	36.5	49	9,050	57	75	12,800	80	107	
9/16-12	7,500	53	70	11,600	82	109	16,400	115	154	
5/8-11	9,300	73	97	14,500	113	151	20,300	159	211	
3/4-10	13,800	129	173	21,300	200	266	30,100	282	376	
7/8-9	11,425	125	166	29,435	321	430	41,550	454	606	
1-8	15,000	187.5	250	38,600	482.5	640	54,540	680	900	
Unified Fine Thread Series										
1/4-28	1,500	55 in-lbs	75 in-lbs	2,300	85 in-lbs	115 in-lbs	3,250	120 in-lbs	163 in-lbs	
5/16-24	2,400	112	150	3,700	173	230	5,200	245	325	
3/8-24	3,600	17 ft-lbs	22.5 ft-lbs	5,600	26 ft-lbs	35 ft-lbs	7,900	37 ft-lbs	50 ft-lbs	
7/16-20	4,900	27	36	7,550	42	55	10,700	59	78	
1/2-20	6,600	41	55	10,200	64	85	14,400	90	120	
9/16-18	8,400	59	79	13,000	92	122	18,300	129	172	
5/8-18	10,600	83	110	16,300	128	170	23,000	180	240	
3/4-16	15,400	144	193	23,800	223	298	33,600	315	420	
7/8-14	12,610	138	184	32,480	355	473	45,855	500	668	
1-12	16,410	205	273	42,270	528	704	59,670	745	995	

Clamp load estimated as 75% of proof load for specified bolts.

Torque values for 1/4 and 5/16 inch series are in inch-pounds. All other torque values are in foot-pounds.

Torque values calculated from formula $T = KDF$

where: $K=0.15$ for "lubricated" conditions

$K=0.20$ for "dry" conditions

LUBRICATION

Lubrication Legend



Multipurpose spray lube



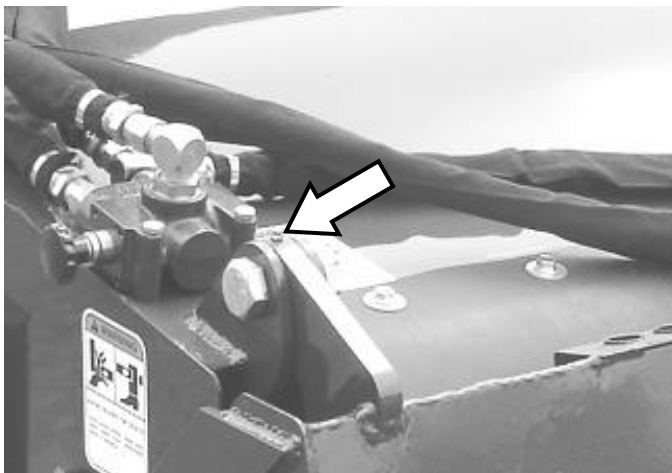
No. 2 Lithium base gun grease



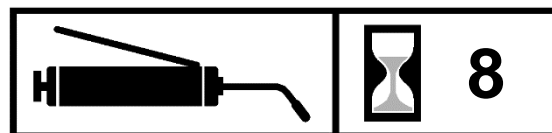
Clean engine oil



Intervals at which lubrication is required



Use No. 2 lithium base gun grease when lubricating all attachment grease fittings.



Grease both pivot ear zerks every **8 hours** of operation.

ROUTINE MAINTENANCE

Replacing Brush Sections

1. Remove the side rubber shields from both sides of the attachment.



2. Remove the two endplate mounting bolts and nuts on each side. Retain for later reassembly.

NOTE: The motor hex drive block will be removed with the endplate.

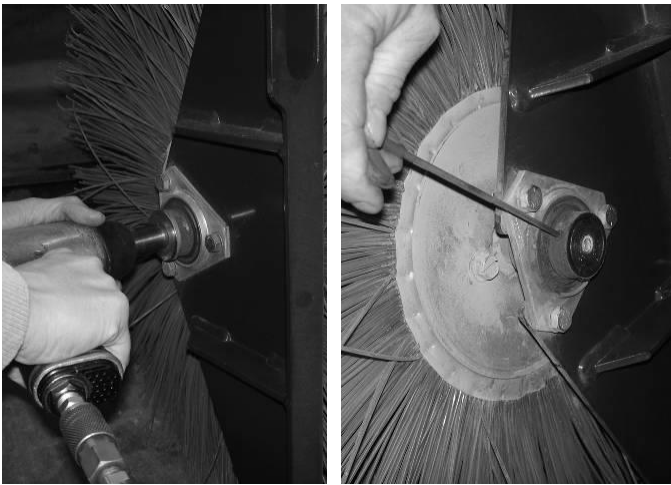


3. Using a hoist or other suitable lifting method, raise the hood and block it up in place with jack stands.

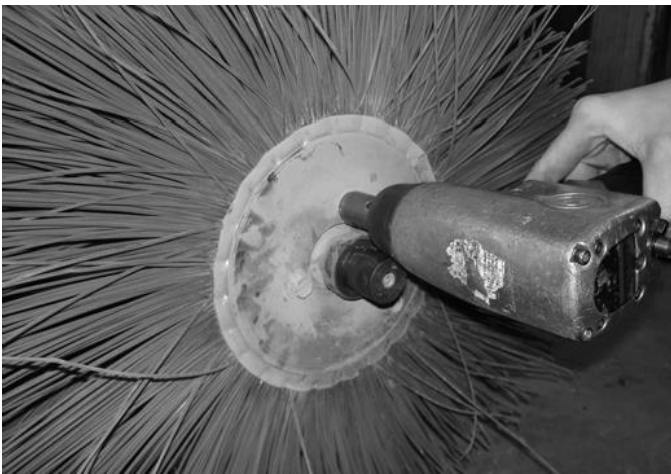


4. Carefully remove the brush head assembly.

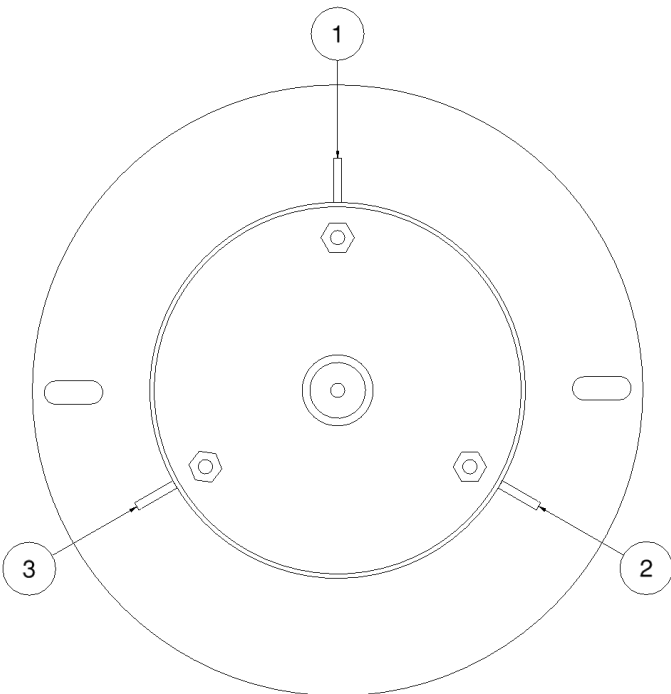
ROUTINE MAINTENANCE



5. Remove the bearing retaining bolt and washer.
6. Loosen the set screws on the bearing assembly and slide the bearing and endplate off of the arbor.
7. Remove the three bolts holding the brush retainer to the arbor, and remove the brush retainer.



8. Remove the old brush sections.
9. Number the ribs on the arbor as 1, 2, and 3.
10. Slide the first flat brush section onto the arbor so that the pins are around one of the arbor ribs.



11. Slide the first “wavy” brush section on so that the pins are around rib 1.
 12. Slide the second “wavy” brush section on so that the pins are around rib 2.
- NOTE:** Every other brush section will need to be flipped so that the high spots of the bristle “waves” on the neighboring sections hit each other.
13. Slide the third “wavy” brush section on so that the pins are around rib 3.

ROUTINE MAINTENANCE

14. Continue this pattern until all “wavy” brush sections are installed.

NOTE: Install 28 “wavy” brush sections on a 60” arbor, 36 “wavy” brush sections on a 72” arbor, or 42 “wavy” brush sections on an 84” arbor.

15. Slide the second flat brush section onto the arbor so that the pins are around one of the arbor ribs.

16. Reinstall the brush retainer and three bolts.

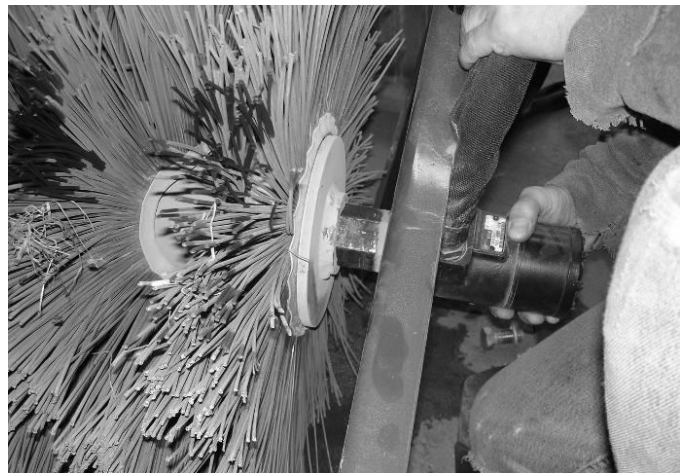
17. Slide the bearing/endplate assembly onto the end of the arbor. Tighten the bearing setscrews, and reinstall the bearing retaining bolt and washer.

18. Move the arbor and brush assembly into the bucket housing. Lower the hood and make sure the endplates and rubber side shields are in place for reinstallation.

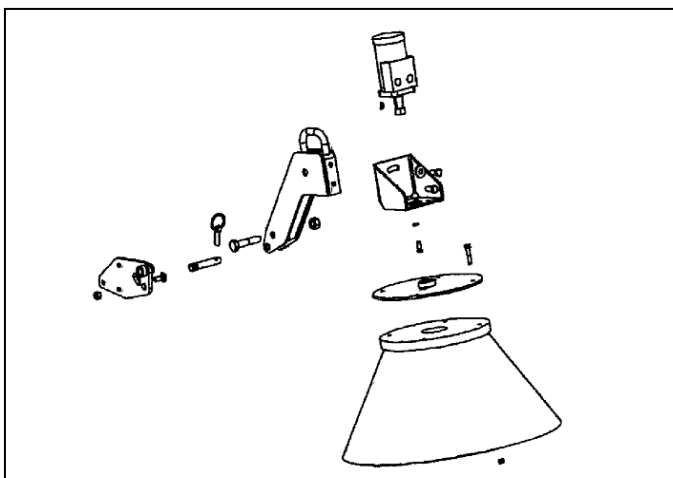
19. Align the bolt holes and secure the endplates to the hood. Slide the motor and endplate assembly into the arbor, aligning the hex drive block inside the arbor.

20. Be sure to adjust the arbor height to ensure a 2” to 4” bristle contact area. This is done by positioning the rear endplate bolts in the appropriate holes on the adjustment bars.

21. Tighten all hardware to the proper torque(s). Refer to the bolt torque chart on page 13 of this manual.



SET-UP ASSEMBLY



Curb Sweeper Installation

Unpack the parts and compare them to the parts list. If any parts are damaged or missing, contact Erskine Attachments LLC for replacement parts.

The curb sweeper is designed to be mounted on either the right or the left side. Ideally, it is recommended to mount the curb sweeper on the right side (farthest away from the operator).



1. Attach the mount plate with the three carriage bolts and lock nuts provided.

IMPORTANT: Tighten the mounting bolts to 65-70 ft.-lbs.

NOTE: The shield may be removed to allow easier access to the mounting holes.



2. Mount the sweeper arm to the mounting bracket using the 3/4" x 3-1/2" bolt and lock nut provided. Position the sweeper arm in the up position, and secure in place with the 3-point pin and lynch pin.

IMPORTANT: Tighten the bolts to 220-240 ft.-lbs.

SET-UP ASSEMBLY

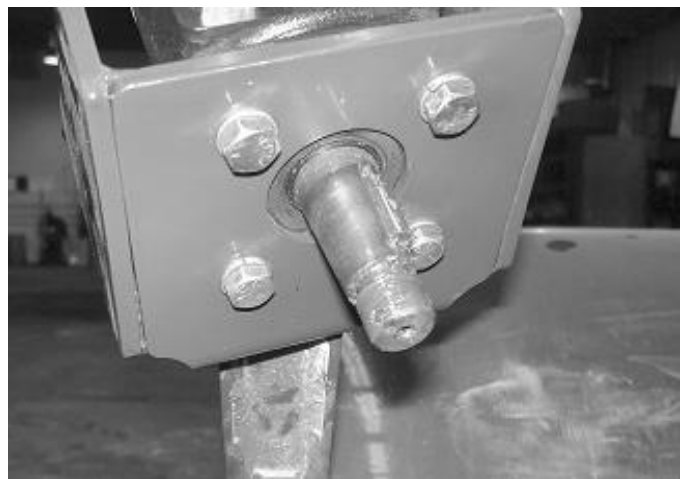
3. Mount the motor bracket to the sweeper arm using two 1/2" x 1-1/4" bolts and one 1/2" flat washer as shown.

IMPORTANT: Tighten the bolts to 65-70 ft.-lbs.

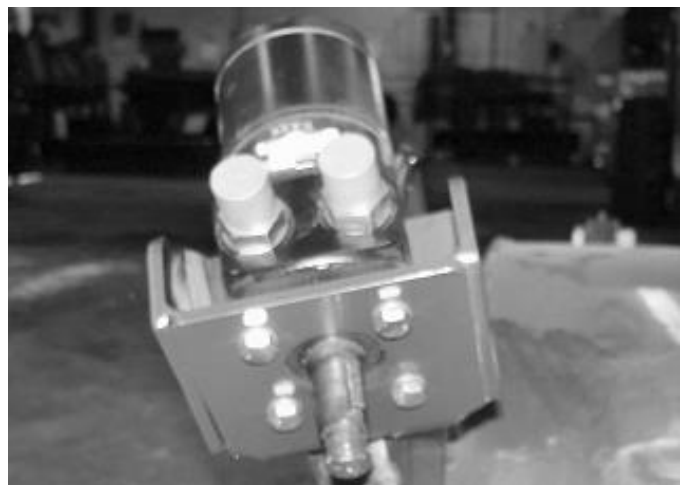


4. Mount the motor to the motor bracket using the four bolts and lock washers.

IMPORTANT: Tighten the bolts to 25-30 ft.-lbs.



5. Install the two straight hydraulic fittings into the motor. Be sure to leave the exposed ends capped until the hoses are installed.



SET-UP ASSEMBLY

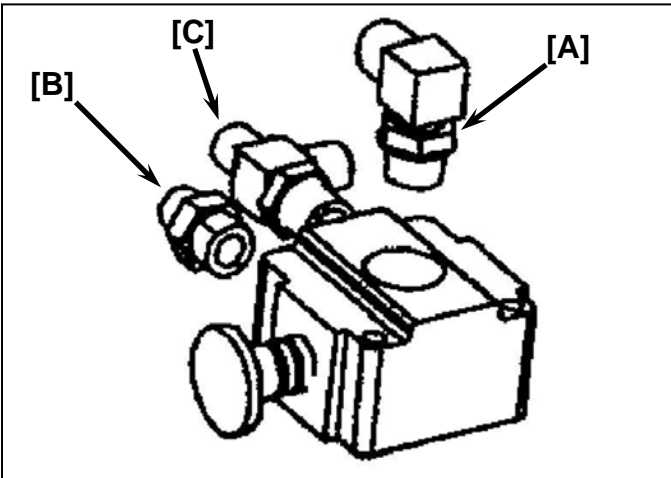


6. Mount the hub plate to the motor using the woodruff key and nut.



7. Mount the sweeper brush to the hub plate with the four 3/8" x 2" bolts and lock nuts.

IMPORTANT: Tighten the bolts to 25-30 ft.-lbs.



8. Attach the elbow [A], straight [B], and tee [C] fittings to the valve as shown, if not already pre-assembled.

SET-UP ASSEMBLY

9. Mount the selector valve with the two bolts and lock nuts provided. Reach underneath the rear rubber shield in order to install the lock nut.

IMPORTANT: Tighten the bolts to 25-30 ft.-lbs.

NOTE: Do not overtighten the bolts, as this will interfere with the valve's operation.



10. Attach the 90° hose ends of the 120" hoses to the motor mounted on the curb sweeper.

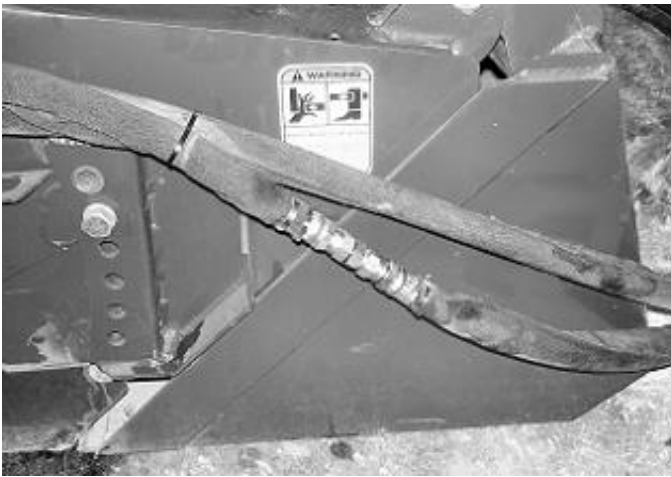
If installing the curb sweeper on the right side of the attachment, attach the hose from port "A" on the motor to the tee adaptor, and attach the hose from port "B" on the motor to the straight adaptor. Reverse the hose orientation if mounting the curb sweeper on the left side of the attachment. This will ensure proper brush rotation.



11. Route the valve-to-motor hoses as shown, and secure in place with the provided cable ties.

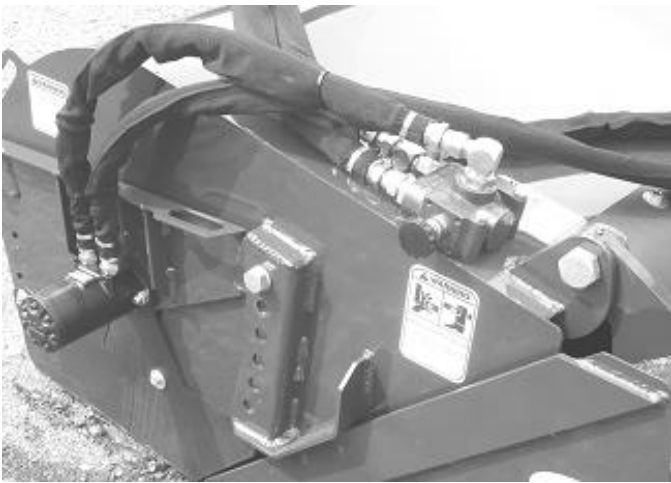


SET-UP ASSEMBLY



12. Remove the union fitting from the two-piece lead hose.

NOTE: Have a pan ready to catch the hydraulic fluid from the hoses.



13. Connect the shorter hose from the motor to the elbow fitting on top of the selector valve. Connect the longer hose to the tee fitting.



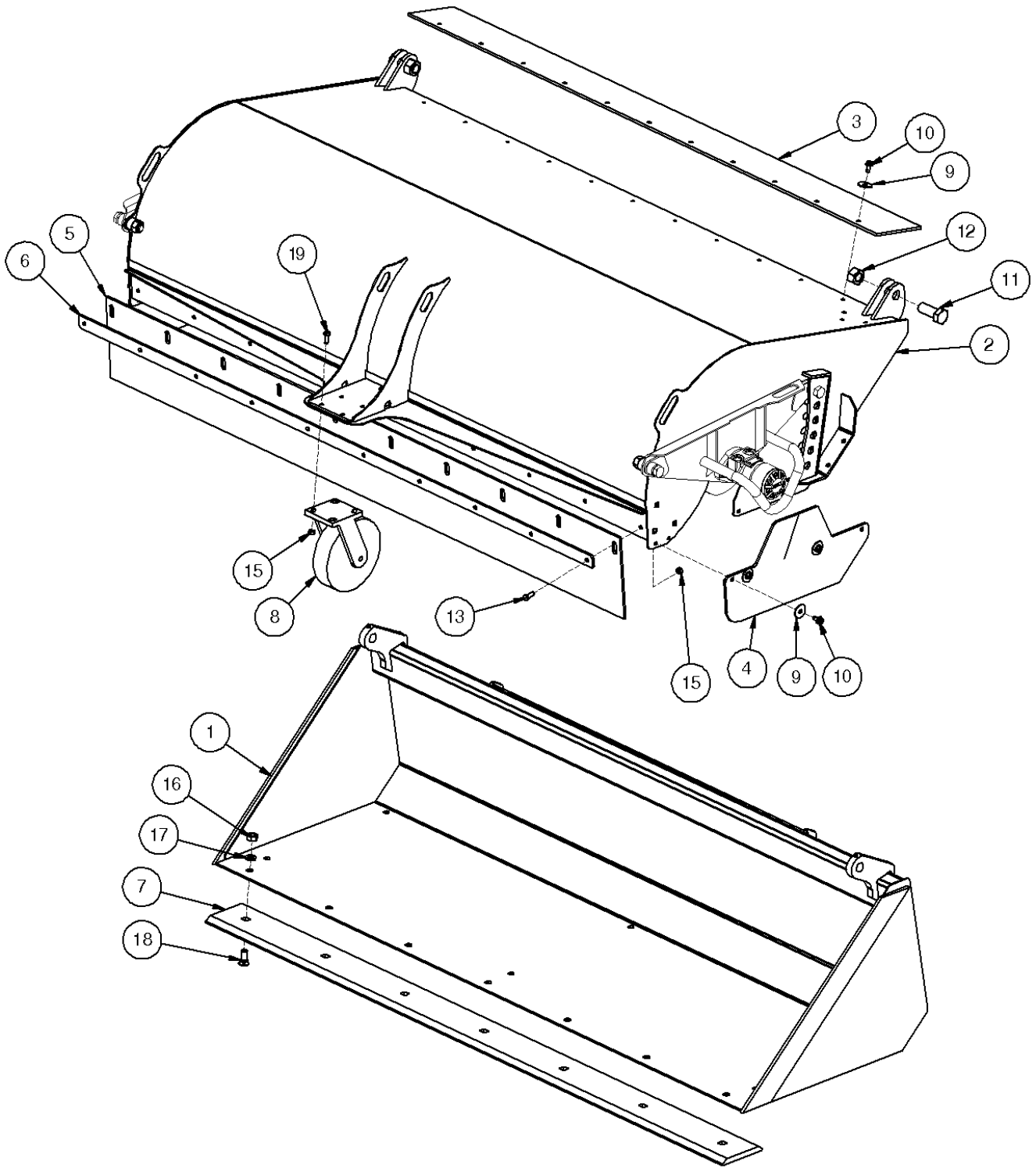
14. Clean the surface of the hood next to the valve block, and install the "On-Off" decal as shown.

IMPORTANT: Refer to pages 11-12 of the "Operating Instructions" in this manual for proper operation of the curb sweeper.

PARTS INFORMATION

ITEM	QTY	PART NO.	DESCRIPTION	STOCK NO.
1	1	318501	BUCKET PUB 60 W/A	
	1	422193	BUCKET PUB MULTIHOOG 60 W/A	MULTIHOOG MOUNT
	1	318402	BUCKET PUB 72 W/A	
	1	422192	BUCKET PUB MULTIHOOG 72 W/A	MULTIHOOG MOUNT
	1	318476	BUCKET PUB 84 W/A	
	1	422193	BUCKET PUB MULTIHOOG 84 W/A	MULTIHOOG MOUNT
2	1	318502	BODY PUB 60 W/A	
	1	318400	BODY PUB 72 W/A	
	1	318477	BODY PUB 84 W/A	
3	1	318525	SHIELD RUBBER TOP 60	
	1	318432	SHIELD RUBBER TOP 72	
	1	318475	SHIELD RUBBER TOP 84	
4	2	318427	SHIELD RUBBER SIDE	
5	1	318527	SHIELD RUBBER FRONT 60	
	1	318426	SHIELD RUBBER FRONT 72	
	1	318471	SHIELD RUBBER FRONT 84	
6	1	318526	FLAT MAT CLAMP PUB 60 Z	
	1	318417	FLAT MAT CLAMP PUB 72 Z	
	1	318473	FLAT MAT CLAMP PUB 84 Z	
7	1	312428	CUTTING EDGE B 62 DB	
	1	318430	CUTTING EDGE B 74 DB	
	1	318474	CUTTING EDGE B 86 DB	
8	1	318559	WHEEL CASTER ASSM 10.13 TALL X8X2	REPLACED 318499
	1	318499	WHEEL CASTER ASSEMBLY 8 X 2	REPLACED BY 318559
9	18 (60) / 19 (72) / 21 (84)	33220	WASHER FENDER	3/8 X 1 1/2
10	18 (60) / 19 (72) / 21 (84)	32467	BOLT FLG THRD RLNG	3/8 X 3/4 NC GR 5
11	2	13463	BOLT HEX	1 X 2-1/2 NC GR 5
12	2	37219	NUT HEX LOCK	1 NC
13	9 (60) / 10 (72) / 12 (84)	13105	BOLT HEX	3/8 X 1 NC GR 5
15	20 (60) / 21 (72) / 23 (84)	37212	NUT HEX LOCK	3/8 NC
16	6 (60) / 7 (72) / 8 (84)	36314	NUT HEX FULL	5/8 NC
17	6 (60) / 7 (72) / 8 (84)	33630	WASHER LOCK	5/8"
18	6 (60) / 7 (72) / 8 (84)	22664	BOLT PLOW	5/8 X 1-3/4 NC GR5
19	4	13107	BOLT HEX	3/8 X 1-1/4 NC GR 5

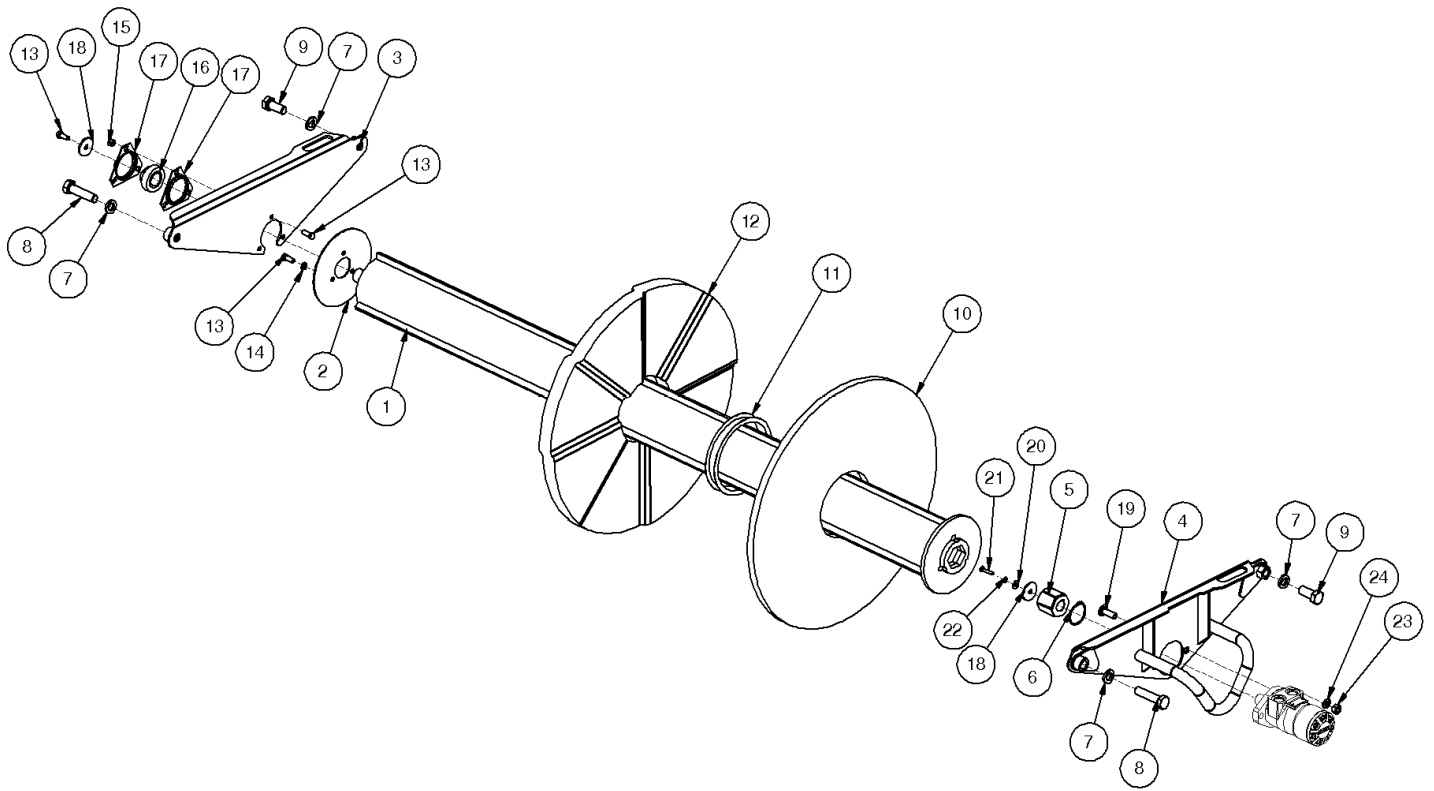
PARTS INFORMATION



PARTS INFORMATION

ITEM	QTY	PART NO.	DESCRIPTION	STOCK NO.
		318531	PKG WAFER 60 POLY	2 STR & 28 CONV POLY
		318532	PKG WAFER 60 POLY/STEEL	2 STR & 14 STEEL & 14 POLY CONV
		318533	PKG WAFER 60 STEEL	2 STR & 28 STEEL
		318482	PKG WAFER 72 POLY	2 STR & 36 CONV POLY
		318483	PKG WAFER 72 POLY/STEEL	2 STR & 18 STEEL & 18 POLY CONV
		318519	PKG WAFER 72 STEEL	2 STR & 36 STEEL
		318484	PKG WAFER 84 POLY	2 STR & 42 CONV POLY
		318485	PKG WAFER 84 POLY/STEEL	2 STR & 21 STEEL & 21 POLY CONV
		318520	PKG WAFER 84 STEEL	2 STR & 42 STEEL
1	1	318503	ARBOR PUB 60 W/A	
	1	318409	ARBOR PUB 72 W/A	
	1	318478	ARBOR PUB 84 W/A	
2	1	318419	ENDPLATE ARBOR PAINTED	(318418 UNPAINTED)
3	1	318403	BRKT PIVOT RH W/A	
4	1	318404	BRKT PIVOT LH W/A	
5	1	318459	DRIVE BLOCK HEX 1" BORE	INCLUDES SNAP RING
6	1	313333	RING SNAP EXT 2 X .063	
7	4	33632	WASHER LOCK	3/4"
8	2	13365	BOLT HEX	3/4 X 3 NC GR 5
9	2	13360	BOLT HEX	3/4 X 1-3/4 NC GR 5
10	2	318410	WAFER STR POLY 24	
11	2	318488	WAFER PUB SPACER 6-3/8	INCLUDED WITH FLAT WAFER
12	* *	318411	WAFER PUB CONV POLY 24	SEE PKG QTY
	* *	318487	WAFER PUB CONV STEEL 24	SEE PKG QTY
13	7	103116	BOLT HEX	3/8 X 1 NC GR 5
14	3	103880	WASHER LOCK	3/8"
15	3	37212	NUT HEX LOCK	3/8 NC
16	1	202159	BRG INSERT 1 1/4 SM (SS)	
17	2	203741	FLANGET 3-B	
18	2	202830	WASHER FLAT LARGE	3/8 X 1-3/4
19	2	318277	BOLT CARRIAGE SHORT NECK	1/2 X 1-1/2 NC GR 5
20	1	33004	WASHER FLAT	1/4"
21	1	13007	BOLT HEX	1/4 X 1-1/4 NC GR 5
22	1	33618	WASHER LOCK	1/4"
23	2	36110	NUT HEX FULL	1/2 NC
24	2	33626	WASHER LOCK	1/2"

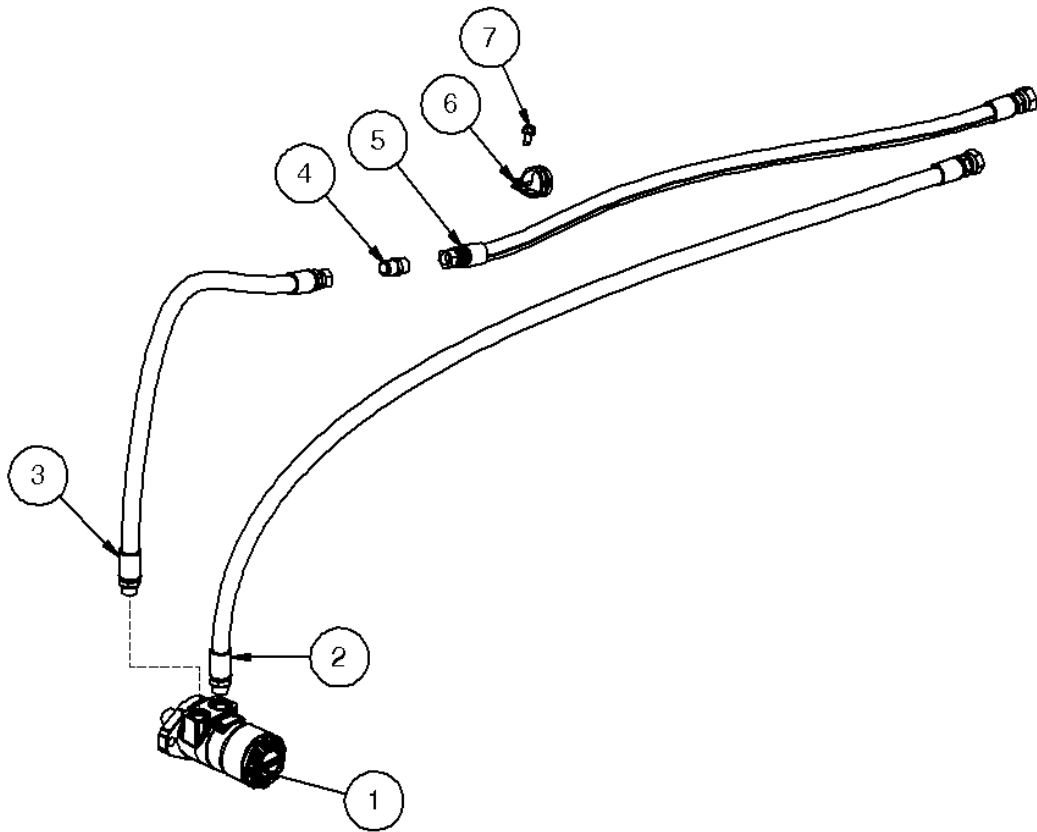
PARTS INFORMATION



PARTS INFORMATION

ITEM	QTY	PART NO.	DESCRIPTION	STOCK NO.
1	1	318420	MOTOR HYD 17.9 CID 2-BOLT	
2	1	318489	HOSE 5/8 X 116 12FJX-10MB	LEAD TO MOTOR
3	1	318490	HOSE 5/8 X 32 10MB-10FJX	MOTOR TO UNION
4	1	300214	ADPT NIPPLE 10MJ-10MJ	
5	1	318491	HOSE 5/8 X 89" 10FJX-12FJX	UNION TO RETURN
6	1	315639	CLAMP HOSE 1-1/2 (R CLAMP)	
7	1	32467	BOLT THDCUT FLG	3/8 X 3/4 NC GR 5

PARTS INFORMATION



PARTS INFORMATION

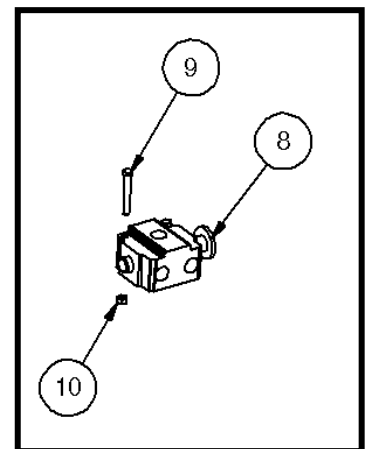
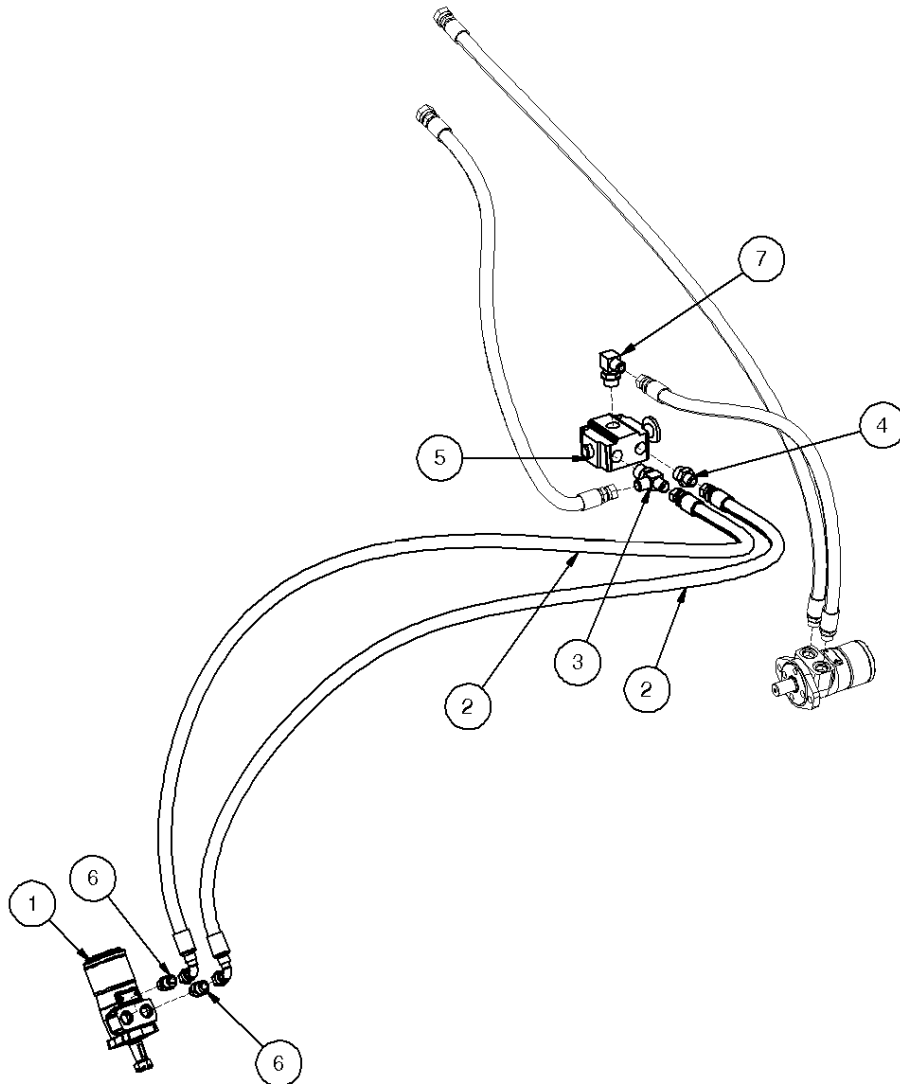
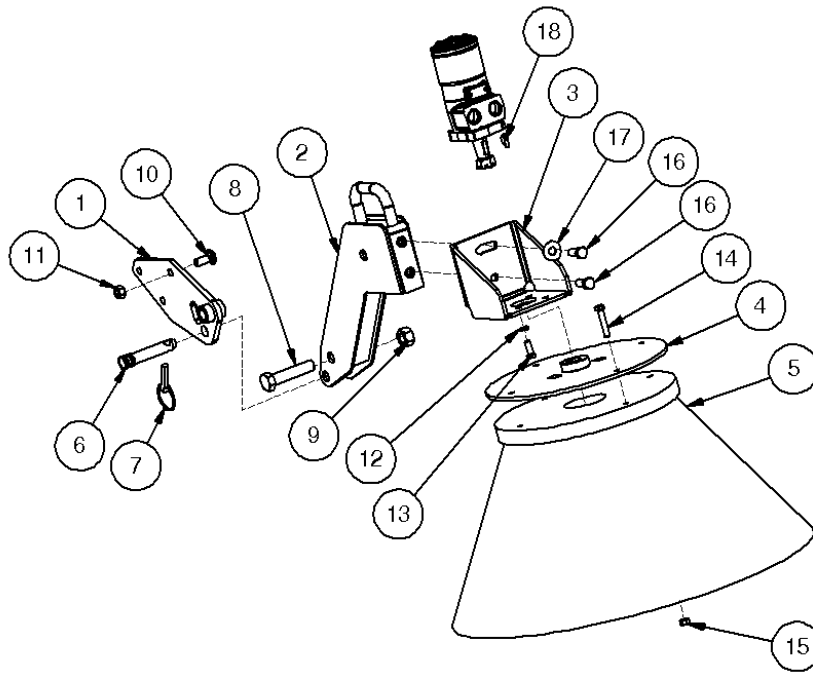
CURB SWEEPER ASSEMBLY

ITEM	QTY	PART NO.	DESCRIPTION	STOCK NO.
1	1	318406	MOUNT PLATE W/A	
2	1	318405	ARM GUTTER W/A	
3	1	318449	BRACKET MOTOR PAINTED	
4	1	318407	HUB PLATE GUTTER BRUSH W/A	
5	1	318437	CURB SWEEPER STEEL	
	1	318521	CURB SWEEPER POLY	
6	1	104397	PIN 3-PT UPPER CAT #1	
7	1	104432	PIN LYNCH 7/16	
8	1	13365	BOLT HEX	3/4 X 3 NC GR 5
9	1	37217	NUT HEX LOCK	3/4 NC
10	3	200066	BOLT CARRIAGE	1/2 X 1-1/4 NC GR 5
11	3	37214	NUT HEX LOCK	1/2 NC
12	4	103880	WASHER LOCK	3/8"
13	4	103116	BOLT HEX	3/8 X 1 NC GR 5
14	4	13111	BOLT HEX	3/8 X 2 NC GR 5
15	4	37212	NUT HEX LOCK	3/8 NC
16	2	13207	BOLT HEX	1/2 X 1 1/4 NC GR 5
17	1	33012	WASHER FLAT	1/2"
18	1	100540	KEY WOODRUFF 1/4 X 1	COMES WITH MOTOR

CURB SWEEPER HYDRAULICS

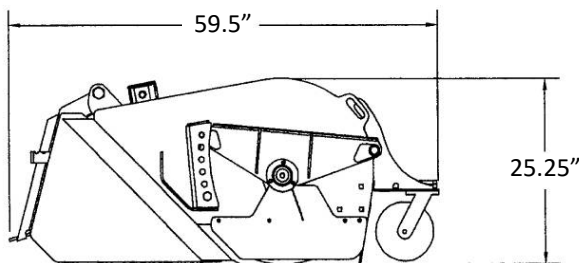
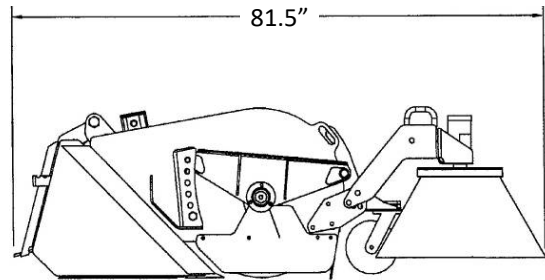
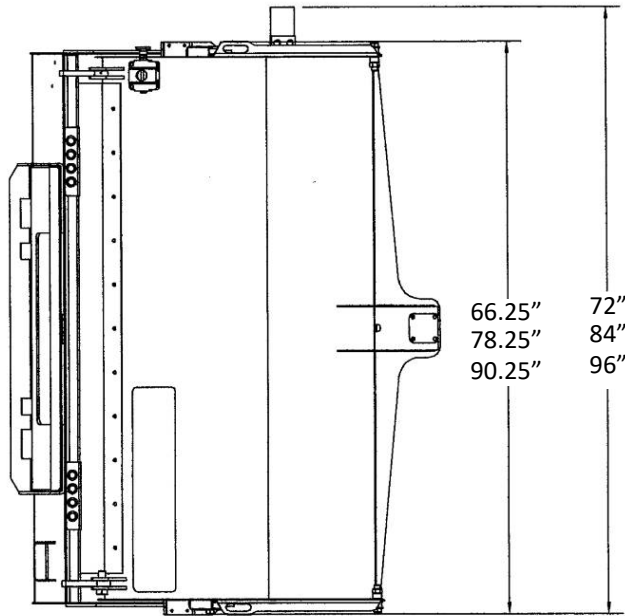
ITEM	QTY	PART NO.	DESCRIPTION	STOCK NO.
1	1	318445	MOTOR HYD 22.6 CID 4-BLT TAPER	
2	2	318492	HOSE 5/8 X 120 10FJX-10FJX90	BLOCK TO MOTOR
3	1	300216	ADPT TEE 12MB-10MJ-10MJ	BLOCK
4	1	201851	ADPT STR 12MB-10MJ	BLOCK
5	1	318441	VALVE 4-WAY SELECT MANUAL	
6	2	201852	ADPT STR 10MB-10MJ	MOTOR
7	1	300215	ADPT ELB 12MB-10MJ-90	BLOCK
8	1	318518	KNOB VALVE SELECTOR	
9	2	13114	BOLT HEX	3/8 X 2 3/4 NC GR 5
10	2	37212	NUT HEX LOCK	3/8 NC

PARTS INFORMATION



GENERAL SPECIFICATIONS

Model	60	72	84
Working Width	60"	72"	84"
Wafer Diameter	24"		
Wafer Quantity	30	38	44
Cutting Edge	5/8" x 6" Bolt-on, reversible		
Drive System	Direct Drive Hydraulic Motor		
Hydraulic Flow Range	13 - 25 GPM		
Operating Weight (Standard)	745 lbs.	835 lbs.	920 lbs.
Curb Sweeper Drive System	Direct Drive Hydraulic Motor		
Curb Sweeper Diameter	26"		
Curb Sweeper Bristle Material	Steel		



Add an additional 12" to the overall width if the Curb Sweeper is installed.

All dimensions are in INCHES.

LIMITED WARRANTY

Erskine Attachments LLC warrants each new machine manufactured by us to be free from defects in material and workmanship for a period of twenty-four (24) months from date of delivery to the original purchaser.

Our obligation under this warranty is to replace free of charge, at our factory or authorized dealership, any part proven defective within the stated warranty time limit.

All parts must be returned freight prepaid and adequately packaged to prevent damage in transit.

This warranty does not cover:

1. New products which have been operated in excess of rated capacities or negligence
2. Misuse, abuse, accidents or damage due to improperly routed hoses
3. Machines which have been altered, modified or repaired in any manner not authorized by our company
4. Previously owned equipment
5. Any ground engaging tools in which natural wear is involved, i.e. tooth tips, cutting teeth, etc.
6. Normal maintenance
7. Fork tines
8. Hydraulic motors that have been disassembled in any manor

In no event will the Sales Representative, Dealership, Erskine Attachments LLC, or any other company affiliated with it or them be liable for incidental or consequential damages or injuries, including but not limited to the loss of profit, rental or substitute equipment or other commercial loss. Purchaser's sole and exclusive remedy being as provided here in above.

Erskine Attachments LLC must receive immediate notification of defect and no allowance will be made for repairs without our consent or approval.

This warranty is in lieu of all other warranties, express or implied by law or otherwise, and there is no warranty of merchantability or fitness purpose.

No agent, employee, or representative of Erskine Attachments LLC has any authority to bind Erskine Attachments LLC to any warranty except as specifically set forth herein. Any of these limitations excluded by local law shall be deemed deleted from this warranty; all other terms apply.

This warranty may not be enlarged or modified in any manner except in writing signed by an executive officer of Erskine Attachments LLC to improve its products whenever it is possible and practical to do so. Erskine Attachments LLC reserves the right to make changes and or add improvements at any time without incurring any obligation to make such changes or add such improvements to products previously sold.

Erskine Attachments LLC
P.O. Box 1083 Alexandria, MN 56308
Phone (218) 435-4045 Fax (218) 435-5293



P/N 320601
Erskine Attachments LLC

Date Printed: 9/22/2022

Printed in U.S.A.